

**ARB HIGH AND LOW MOUNT WINCH BULL BAR TO SUIT
TOYOTA LANDCRUISER 75, 78 AND 79 SERIES
PART No 3412130**

WARNING

**THIS BULL BAR MUST NOT BE FITTED TO AIRBAG EQUIPPED VEHICLES.
FITMENT TO AIRBAG EQUIPPED VEHICLES MAY INTERFERE WITH THE
PROPER OPERATION OF THE AIRBAGS AND MAY RESULT IN SERIOUS INJURY.**

TAKE NOTE OF THE FOLLOWING:

- **THIS PRODUCT MUST BE INSTALLED EXACTLY AS PER THESE INSTRUCTIONS USING ONLY THE HARDWARE SUPPLIED.**
- **IN THE EVENT OF DAMAGE TO ANY BULL BAR COMPONENT, CONTACT YOU'RE NEAREST AUTHORISED ARB STOCKIST. REPAIRS OR MODIFICATIONS TO THE IMPACT ABSORPTION SYSTEM MUST NOT BE ATTEMPTED.**
- **DO NOT USE THIS PRODUCT FOR ANY VEHICLE MAKE OR MODEL, OTHER THAN THOSE SPECIFIED BY ARB.**
- **DO NOT REMOVE LABELS FROM THIS BULL BAR.**
- **THIS PRODUCT OR ITS FIXING MUST NOT BE MODIFIED IN ANY WAY.**

USE.	PART No.	QTY	DISCRIPTION
BULL BAR TO CHASSIS	6151249	2	BOLT M12 X 1.75 X 140mm
	6151189	2	NUT M12 X 1.75
	4581049	4	WASHER FLAT ½"
	4581050	2	WASHER SPRING ½"
	6151250	1	BOLT M12 X 1.75 X 90mm(PRE 1990 MODEL ONLY)
	6151087	8	BOLT M10 X 1.25 X 25mm
	4581040	8	WASHER FLAT M10
	4581048	8	WASHER SPRING M10
10/12000 LM & 8000 HM 8/9000 & 9500 LM WINCH	4581041	4	WASHER FLAT 7/16"
	4581040	4	WASHER FLAT M10
CONTROL BOX BRACKET	3751471	1	CNTRL BOX BRKT 8/9000 & 9500lb LM WINCHES
	3751311	1	CONTROL BOX BRACKET 10/12000lb WINCHES
	6151021	2	BOLT M8 X 20mm
	6151132	2	NUT M8 FLANGE
	4581044	2	WASHER FLAT M8
ROLLER FAIRLEAD TO BAR	6151251	2	BOLT M16 X 150mm
	6151252	2	NUT M16 NYLOC
	4581051	4	WASHER FLAT M16
NUMBER PLATE	3751451	1	NUMBER PLATE BRACKET
	6151017	4	BOLT M6 X 16mm
	6151046	4	WASHER FLAT M6
	6151128	4	NUT FLANGE M6
MISCELANIOUS	3500080	1	ARB UNIVERSAL INDICATOR KIT
	4581011	4	SPACER M12 X 4mm
	180302	4	CABLE TIES 200 X 4.8mm
	5848293	2	PACKER TOW HOOK

TOOLS REQUIRED: Basic tool kit, circlips pliers, drill and 12mm drill bit.

If this bull bar is to be fitted to a pre January 1990 model vehicle a supplementary bolt kit, part number 3512010, is required to fit the bar correctly. Please contact the distributor from whom it was purchased or call the ARB office in your state. Failure to install these additional items will void warranty should such a claim arise.

Regardless of which year vehicle you own some hardware supplied might not be used in fitment of the bullbar to your vehicle.

Preparation



1. Remove bumper bar and tow hooks from the vehicle.

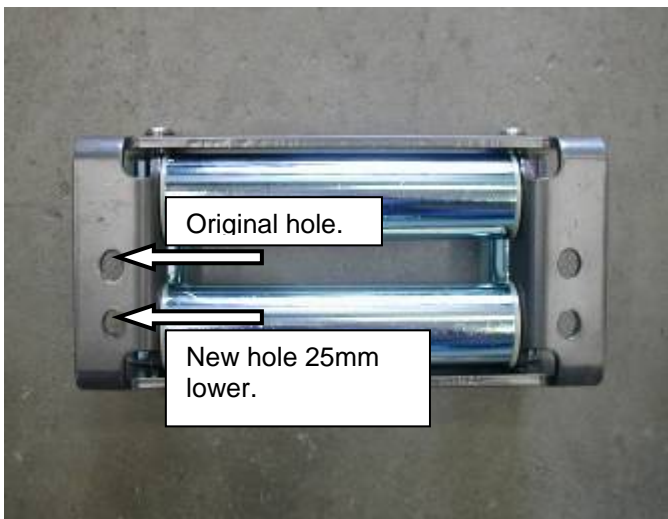
NOTE: Retain the tow hooks and the retaining bolts.



2. Fit indicators into the bull bar

If not fitting a winch proceed to step 13.

Winch fitment.



3. Remove the circlips that retain the side pins.
4. Remove the verticle pins and rollers from the roller fairlead.
5. Using a 12mm drill bit, drill two new holes in the roller fairlead 25mm below the original holes.

Winch fitment.

FOR 10 & 12000lb WINCHES



6. Position the winch on a drum or other suitable surface with the mounting holes facing upwards. Loosen the hose clamps that retain the control box. Fit the control box bracket (P/No 3751311) to the control box and refit to the winch motor with the hose clamps securing the control box bracket. Do not full tighten the hose clamps at this stage.

NOTE: For 8, 9 & 9500lb low mount winches fit the control box bracket (P/No 3751471) after fitting the winch. 8000lb high mount winches don't require a separate control box bracket.



7. Lower the bull bar carefully over the winch, making sure the cable from the winch spools from the bottom of the drum. Align the holes in the pan with those in the winch. Using the bolts and spring washers supplied with the winch and flat washers supplied with the bar. Fit to the two upper holes and finger tighten.
8. Place the roller fairlead in position over the lower two holes, fit bolts and washers and finger tighten.
9. Ensure winch and roller fairlead are aligned and tighten the four bolts.



10. Refit the verticle rollers removed in step 4 using the two M16 x 150mm bolts, M16 flat washers and M16 nyloc nuts. Insert the bolts from the top.

NOTE: Do not over-tighten. The rollers on the fairlead must be able to rotate freely.

Winch fitment.



FOR 8,9,9500lb LOW MOUNT WINCHES
If fitting XP 9.5 winch, then go to appendix
A and then step 11.

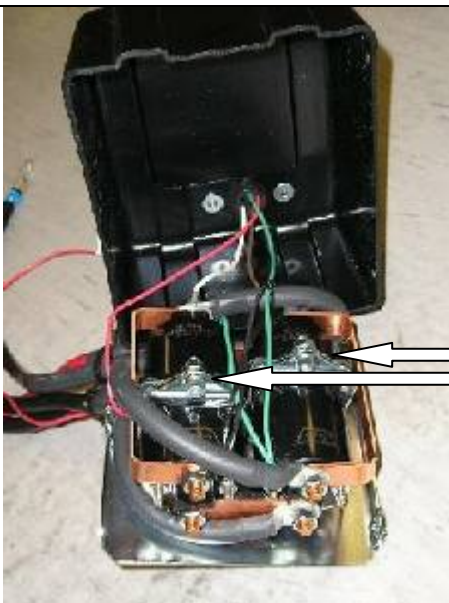
11. Fit the control box bracket (P/No 3751471) to the bull bar using two M8 x 20mm bolts, M8 flat washers and M8 flange nuts.

12. Fit the control box to the control box bracket using the hardware supplied with the winch.

Appendix A



1. If fitting the XP 9.5 winch, remove the cover from the control box.

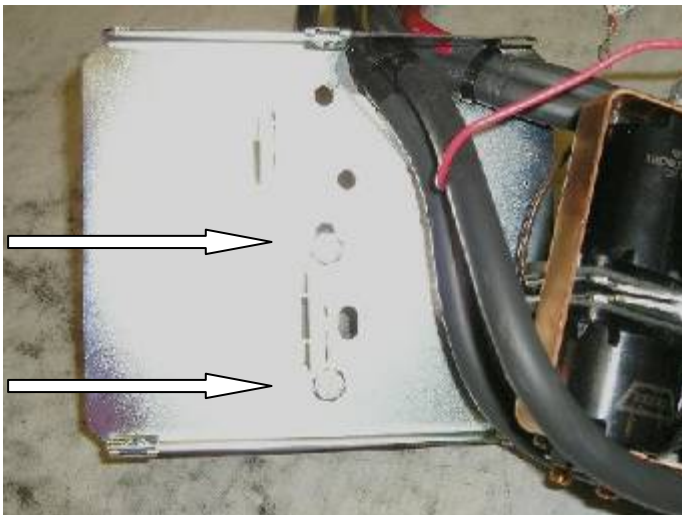


2. Remove the two cap screws, nuts and spacer washers that hold the four solenoids in place.

Appendix A Continued

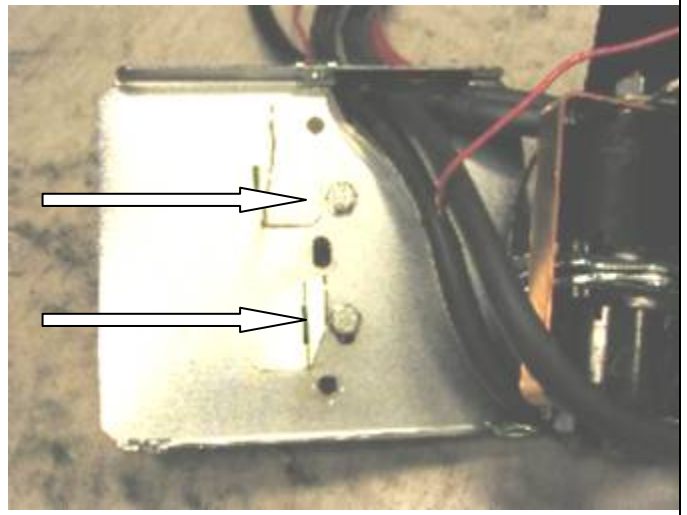


3. Remove the four solenoids from the base of the control box using the copper bus bar as an aid and hold to one side.



Before

4. Remove the two bolts in the base of the control box and reposition them into the more centralised holes



After



5. Place the 4 solenoids over the 2 metal stands that are facing upwards. Make sure they line up with the holes in the base.

Appendix A Continued



6. Replace the 2 cap screws, washers and nuts removed in step 2 above into original holes.
7. Replace the black cover and refit the three cover screws (DO NOT OVER TIGHTEN)

Bull bar installation.



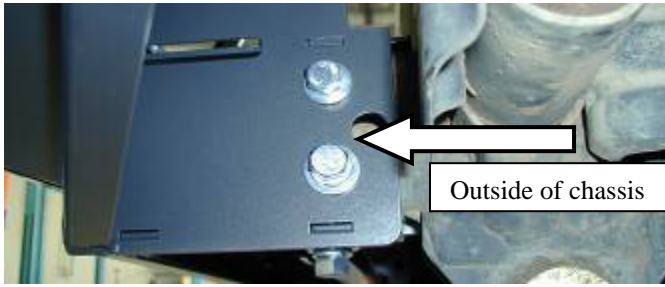
13. With the help of an assistant, lift the bull bar onto the chassis rails of the vehicle.



14. Align the mounting holes and fit the two M12 x 140mm bolts with M12 flat washers through the chassis from the top. Fix with M12 flat and spring washers and M12 nuts.

NOTE: Finger tighten only at this stage.

Bull bar installation.



15. Fit six M10 x 25mm bolts, M10 flat and spring washers to the vehicle, four on the outsides of the chassis and two to the upper inside hole of each side.
16. Align the bull bar to the vehicle making sure that both sides have even gaps to the front guards. Tighten the M10 bolts followed by the M12 bolts.



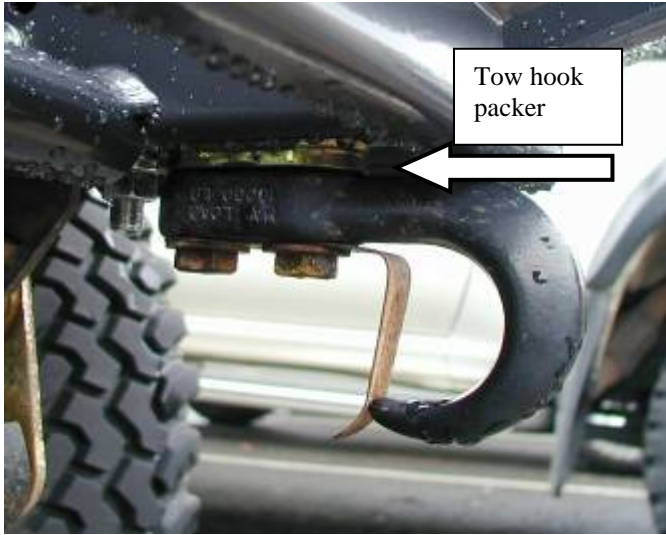
17. Refit the tow-hooks to the vehicle using the original bolts removed earlier. Fit the four tow hook spacers (two each side) between the tow hook and the chassis for the lower bolts.

NOTE: If no tow hook is fitted to the vehicle, fit a M10 x 25mm bolt, M10 flat and spring washer to the lower inside holes of the chassis.



18. Fit the number plate bracket to the bull bar with two M6 x 16mm bolts, M6 flat washers and M6 flange nuts.
19. Attach the number plate to the number plate bracket with the remaining M6 hardware.
20. When finished fitting the bull bar, wire the indicators to the indicator loom of the vehicle using the scotch locks provided.
21. Wire the winch (if fitted) in accordance with the instructions supplied with the winch.
22. Ensure all wires and cables are cable tied out of the way of hot sharp or moving parts.

Extras



- Provisions have been made so that forged recovery hooks (P/No 6125 or 6126 available from ARB stores) can be fitted. If fitting these tow hooks use the tow hook packers provided in the fitting kit between the bull bar and the tow hook.



- High Lift jack apertures have been built into the bull bar. When using a High Lift jack with this bull bar use only the apertures provided.