



FITTING INSTRUCTIONS

ARB WINCH/NONWINCH BUMPER TO SUIT TOYOTA PRADO 2000 FLARE MODELS ONLY

PRODUCT No. 3921130
 5100040 Top Tube Kit
 5100160 Buffer Kit – With holes (required when fitting Top Tube)
 5100170 Buffer Kit – With no holes
FITTING KIT No: 6172357

WARNING

FOR VEHICLES EQUIPPED WITH SRS AIRBAG

WHEN INSTALLED IN ACCORDANCE WITH THESE INSTRUCTIONS, THE
FRONT

PROTECTION BAR DOES NOT AFFECT OPERATION OF THE SRS AIRBAG.

TAKE NOTE OF THE FOLLOWING:

- THIS PRODUCT MUST BE INSTALLED EXACTLY AS PER THESE INSTRUCTIONS USING ONLY THE HARDWARE SUPPLIED.
- DO NOT USE THIS PRODUCT FOR ANY VEHICLE MAKE OR MODEL, OTHER THAN THOSE SPECIFIED BY ARB.
- DO NOT REMOVE LABELS FROM THIS BULL BAR.
- THIS PRODUCT OR ITS FIXING MUST NOT BE MODIFIED IN ANY WAY.

OPTIONAL LIGHT SETS TO SUIT THIS PRODUCT:

- ARB 6821201 Fog Light Kit Suit 3163015
- Up to IPF 900 SERIES FOG OR DRIVING LIGHT SETS

Tools Required

10mm, 18mm, 19mm, 21mm Spanners and Sockets. Phillips head screwdriver, 13mm drill bit and drill.

IMPORTANT

- This winch bumper is suitable only for Warn 9000lb & 9500lb HIGH SPEED winches only.

USE	PART No	QTY	DESCRIPTION
MOUNT ASSY TO VEHICLE	4581049	4	WASHER FLAT M12
	6151095	2	BOLT M12 X 35mm

18/04/13

Page 1 of 12

3786419

	3751845L	1	IMPACT ABSORBER LH
	3751845R	1	IMPACT ABSORBER RH
	4581050	2	WASHER SPRING M12
	3751583	2	BRACKET CAPTIVE NUT
	6151103	2	½" X 3" BOLT
PLASTIC COVER FITTMENT	6151267	8	CLIP CHRISTMAS TREE
	3162162	1	PLASTIC COVER LHS
	3162163	1	PLASTIC COVER RHS
	6151017	4	BOLT M6 X 16mm
	665001	2	TAPE RIB
	6151162	4	NUT M6 NYLOC
	4581072	8	WASHER ¼" X ¾"
WINCH BUMPER TO MOUNT ASS	6151255	6	BOLT M12 X 40mm
	4581050	6	WASHER SPRING M12
	4581007	6	WASHER FLAT M12 LARGE
WINCH	4581044	4	WASHER 3/8"
BUFFER FITTMENT (5100160 Required if fitting Top Tube)	6151128	12	NUT FLANGE M6
	3162153	1	BUFFER LH
	3162154	1	BUFFER RH
BUFFER FITTMENT (5100170 Required if not fitting Top Tube)	6151128	12	NUT FLANGE M6
	3162471L	1	BUFFER LH
	3162471R	1	BUFFER RH
BUFFER LOWER FITTMENT	6151128	5	NUT FLANGE M6
	3162155	1	BUFFER LOWER
TOP TUBE FITTMENT (5100040)	6151255	2	BOLT M12 X 40mm
	4581049	2	WASHER FLAT M12
	4581050	2	WASHER SPRING M12
	6131174	1	TOP TUBE
CONTROL BOX FITTMENT	3756220	1	CONTROL BOX BRACKET
	6151017	2	BOLT M6 X 16MM
	6151128	4	NUT FLANGE M6
WINCH COVER FITTMENT	6151128	2	NUT FLANGE M6
	6151256	2	SCREW M6 S/STEEL BUTTON HEAD
	6191001	1	WINCH COVER EXTRUSION
	6521031	1	WINCH COVER
	4581304	2	WASHER M6 S/S
NUMBER PLATE FITTMENT	6151017	2	BOLT M6 X 16mm
	6151128	2	NUT FLANGE M6
	6781408	1	TAPE DOUBLE SIDED

LIGHT HOUSING	3163015	1	COMBINATION LIGHT SURROUND KIT
	3821151L	1	TURN SIGNAL/CLEARANCE LIGHT
	3821151R	1	TURN SIGNAL/CLEARANCE LIGHT
CB	3162152	2	PLASTIC PLUG DIA16
WIRING	6821152	2	TURN SIGNAL / CLEARANCE LIGHT LOOM
	180701	6	SCOTCH LOCK
	180302	10	CABLE TIE

ASSEMBLY SEQUENCE FOR WINCH BUMPER.

1.



1. Remove the bumper bar and grill.
2. Remove the cross member and tow brackets.
3. Using the outer hole as a guide drill out a diameter 13mm hole through the inner wall of the chassis rail. See picture.

2.



1. Mount the impact absorbers to each side of the chassis rails using the existing bolts, the two M12 X 35mm bolts and the 1/2" X 3" bolt and captive nut bracket.

3.

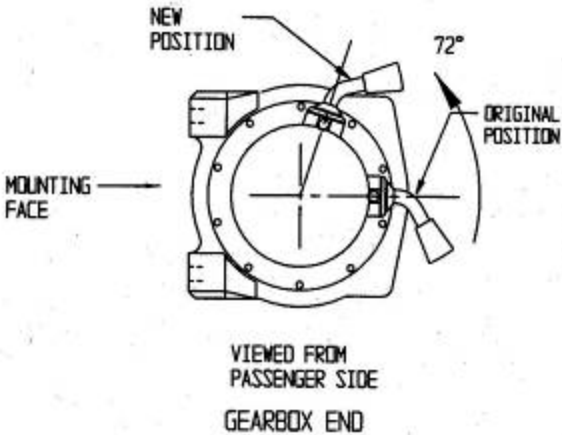
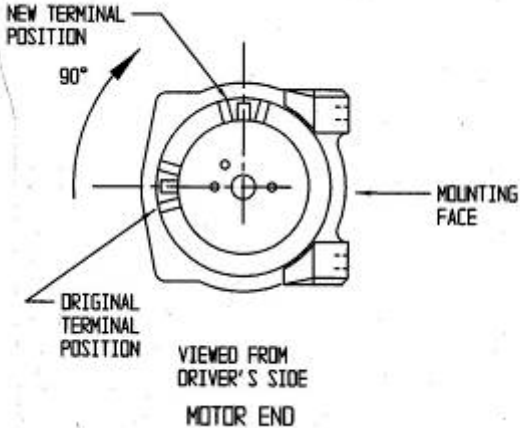


1. Peel the backing off the rubber extrusion and carefully adhere it to the under side of the headlights and wheel arch.

NOTE: The contact surface on the vehicle must be clean from foreign matter: - oil, dust etc

2. Trim the rubber at the end of the wheel arch and inside of the headlights.

ASSEMBLY SEQUENCE FOR WINCH BUMPER.

<p>4.</p> 	<p>(If fitting the winch.)</p> <ol style="list-style-type: none"> To place the winch clutch handle in a convenient location the winch gearbox must be rotated 2 hole spacings, 72 degrees, in an anti-clockwise direction when viewed from the gearbox end. Place the winch on its end and remove all gearbox bolts. Gently raise the gearbox just enough to rotate it. Do not completely remove the gearbox and avoid damaging the gasket. Refit all bolts and tighten. <p>NOTE: Take care not to lift the assembly more than a couple of millimetres while rotating to the desired position to avoid unmeshing the gears.</p>
<p>5.</p> 	<ol style="list-style-type: none"> To place the winch motor in the correct location the winch motor must be rotated 90 degrees, in a clockwise direction when viewed from the motor end. Place the winch on its end and remove the 2 motor retaining bolts. Gently raise the motor just enough to rotate it. Do not completely remove the motor and avoid damaging the gasket. Refit all bolts and tighten. <p>NOTE: Take care not to lift the assembly more than a couple of millimetres while rotating to the desired position to avoid unmeshing the gears.</p>
<p>6.</p>	<ol style="list-style-type: none"> Install the winch using bolts, nuts and spring washers supplied by Warn, and the 4 x 3/8" flat washers supplied in the bolt kit. Refer to Warn installation instructions for correct procedure. Adjust winch in slots until the winch is centralised in the bull bar. Assemble the control box bracket to the control box using M6 flange nuts. Mount the control box to the bar using M6 X 16 bolts and M6 flange nuts. <p>NOTE: The gearbox is on the passenger side for the 8,000lb and 9,000lb. The cable spools from the bottom for the two winches mentioned.</p>

ASSEMBLY SEQUENCE FOR WINCH BUMPER.

7.



1. Fasten the trims using the Xmas tree clips on the four front holes to the top of the wing. Fasten the two rear holes using the M6 x 16mm bolts washers and nyloc nuts.

8.



1. Position the lower buffer on the winch bumper and assemble using the M6 flange nuts.

9.



1. Fit the buffers. Buffer studs fit through the slots in the wings and the pan. Fasten using M6 flange nuts.

Note: This applies to both blank buffers and for those with the hole for optional frame.

CAUTION: DO NOT OVER TIGHTEN THE M6 NUTS AS YOU RISK PULLING THE STUDS OUT OF THE BUFFERS.

ASSEMBLY SEQUENCE FOR WINCH BUMPER.

10.



IF FITTING TOP TUBE

1. Push the tube through the holes in the top of the bumper and fix using the M12 X 40mm bolts washers and spring washers.

NOTE:

Torque these M12 fasteners to 44Nm only (Critical)

11.



(If fitting with winch)

1. Install the roller fairlead using bolts, nuts and spring washers supplied by Warn, and the 4 x 3/8" flat washers supplied in the bolt kit. Refer to Warn installation instructions for correct procedure.

12.



(If fitting with winch)

1. Feed the winch cable through the roller fair lead. Mount the hook to the end of the cable.

If fitting the XP 9.5 winch go to step 13. For any other winch, go to step 19.

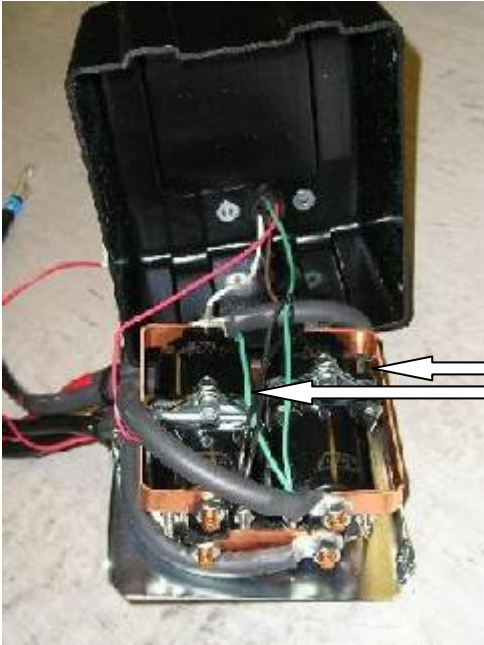
ASSEMBLY SEQUENCE FOR WINCH BUMPER.

13.



1. Remove the cover from the control box.

14.



1. Remove the two cap screws, nuts and spacer washers that hold the four solenoids in place.

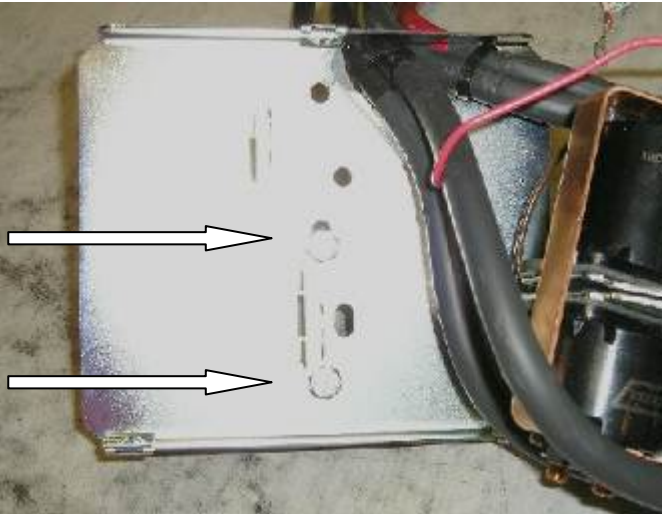
15.



1. Remove the four solenoids from the base of the control box using the copper bus bar as an aid and hold to one side.

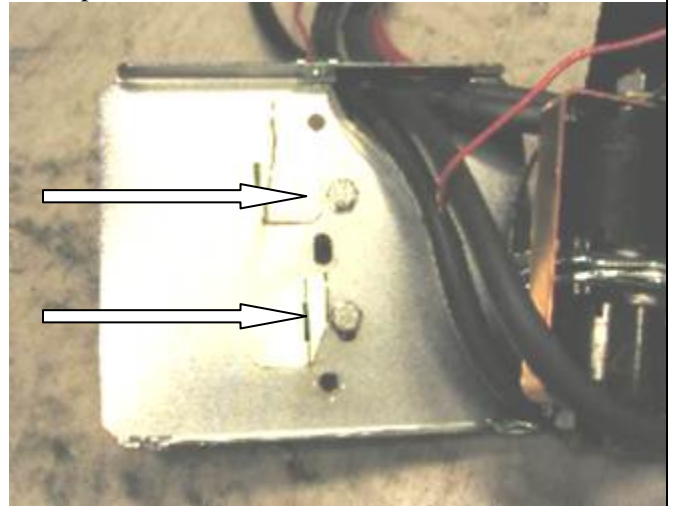
ASSEMBLY SEQUENCE FOR WINCH BUMPER.

16.



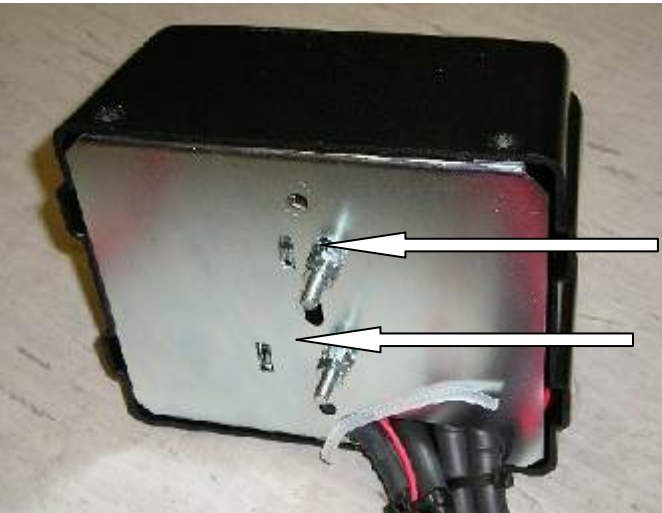
Before

1. Remove the two bolts in the base of the control box and reposition them into the more centralised holes



After

17.



1. Place the 4 solenoids over the 2 metal stands that are facing upwards. Make sure they line up with the holes in the base.

18.



1. Replace the 2 cap screws, washers and nuts removed in step 14 above into original holes.
2. Replace the black cover and refit the three cover screws (DO NOT OVER TIGHTEN)

ASSEMBLY SEQUENCE FOR WINCH BUMPER.

19.



1. Assemble the control box bracket to the control box using M6 flange nuts.
2. Mount the control box to the bar using M6 X 16 bolts and M6 flange nuts.

20.



1. With the aid of another person place the bar on the mount assy.
2. Insert the six M12 x 40mm bolts with the large plate washers and spring washers to finger tight. The bolts screw from the inside of the upright. See picture.

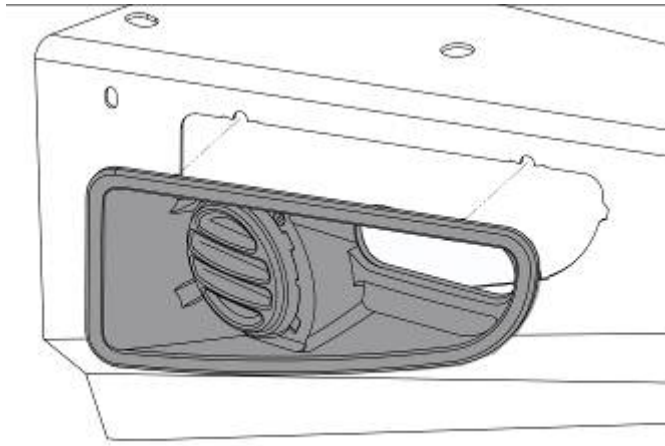
1.



1. Using another person position the bar to line up the end of the wing to the wheel arch and close the gap between the plastic trim and guard profile. Tighten all bolts.
2. Ensure that the gap between the top of the wing and the fender line is parallel .

ASSEMBLY SEQUENCE FOR WINCH BUMPER.

25.



Assemble and install combination light surrounds (p/n 3163015) as per instructions no. 3786421 supplied with surround kit. Note: Optional fog lamps can be installed at this point as per fitting instruction no. 3783315 supplied with fog lamp kit no. 6821201. Wire the combination lamp to the vehicles indicator and clearance lamps.

Caution: Cable tie all cables together and keep all cables clear of sharp edges and moving parts.

26.



There are two diameter 16 holes located on the top face of the bar. If no CB aerials are fitted the holes can be covered with the plastic plugs provided in the fitting kit.

Place the ARB logo on the front face of the bar in the indentation.

27.



(If not fitting winch)

1. Wrap rubber extrusion around winch cover.
2. Place stainless steel washers over the winch cover fixing holes located on the top middle face of the winch bumper.
3. Place the winch cover on top of the winch bumper inline with the mount holes.
4. Bolt together using the M6 button head stainless steel screws and M6 nuts.

ASSEMBLY SEQUENCE FOR WINCH BUMPER.

28.



Fitting with winch



Fitting without

winch

(If fitting with winch.)

1. Peel off one side of the double sided tape and adhere to the top rear side of the number plate. Note: Clean the adhering surfaces before applying tape with an alcohol solvent.
2. Peel off the other side of the tape and bolt to the winch bumper with the M6 X 16mm bolts and M6 flange nuts through the lower holes of the number plate.
3. Press firmly to the top of the number plate so the tape can properly adhere.

(If not fitting with winch.)

1. Bolt the number plate through the top holes using M6 X 16mm bolts and M6 flange nuts.
2. If desired the double sided tape can be used down the sides of the number plate.

29.

(If fitting with winch)

Connect the winch control box cables to the winch motor. Refer to the Warn handbook for additional information. Connect the long winch + & - cables to the vehicle after the bar is installed. Refer to the Warn winch manual for vehicle wiring instructions.

Ensure that these cables are installed well clear of sharp, hot or moving objects. Secure the winch cables to the vehicle and winch bumper with the supplied cable ties.

30.

Wire the clearance / turn signal lights to the vehicle wiring.