

ARB AIR LOCKER *Air Operated Locking Differentials*

RD127 Land Rover, 10 SPL, Banjo

Specs:

Axle Spline	10 tooth, Ø28.2mm [1.11"]
Ratio Supported	3.54:1
Ring Gear ID	125.4mm [4.94"]
Ring Gear Bolts	10 bolts on Ø142mm [5.59"]
Ring Gear Torque	58Nm [43 ft-lb]
Backlash	0.10-0.17mm [0.004-0.007"]
Bearing Cap Torque	90Nm [66 ft-lb]

ITEM #	QTY	DESCRIPTION	PART #	NOTES
01	1	FLANGE CAP ASSEMBLY	027312	
02	1	BONDED SEAL	160702	
03	1	CLUTCH GEAR	050806	
04	2	SHORT CROSS SHAFT	060403	
05	1	LONG CROSS SHAFT	060204	
06	1	SIDE GEAR	SEE NOTE	2
07	2	SIDE GEAR THRUST WASHER	151010	
08	2	COUNTERSUNK SCREW	200213	
09	3	RETAINING PIN	120601	
10	2	TAPERED ROLLER BARING	NOT SUPPLIED	
11	1	SEAL HOUSING RETAINING CLIP	150602	
12	1	SEAL HOUSING ASSEMBLY	082001	
13	2	SEAL HOUSING O-RINGS	160206	
14	1	ADJUSTER NUT	100201	
*	1	ADJUSTER NUT	100301	
15	8	RETURN SPRINGS	150113	
16	1	SPLINED SIDE GEAR	SEE NOTE	2
17	4	PINION GEAR	SEE NOTE	2
18	4	PINION THRUST WASHER	151110	
19	1	SPIDER BLOCK	070201	
20	1	DIFFERENTIAL CASE	013012	
*	1	BULKHEAD FITTING KIT (O-RING TYPE)	170111	
*	1	PUSH-IN FITTING (5mm to 1/8" BSPP)	170201	
*	1	NIPPLE (1/8" to 1/8" BSPT)	170501	
*	1	AIR LINE (5mm DIA X 6m LONG)	170301	1
*	1	SOLENOID VALVE (12V)	180103	
*	1	SWITCH	180209	
*	1	SWITCH COVER (FRONT)	180210	
*	1	SWITCH COVER (REAR)	180211	
*	10	CABLE TIE	180301	
*	1	WARNING LABEL	210101	
*	1	BUMPER STICKER	210102	
*	1	OPERATING & SERVICE MANUAL	210200	
*	1	INSTALLATION GUIDE	2102127	

Notes:

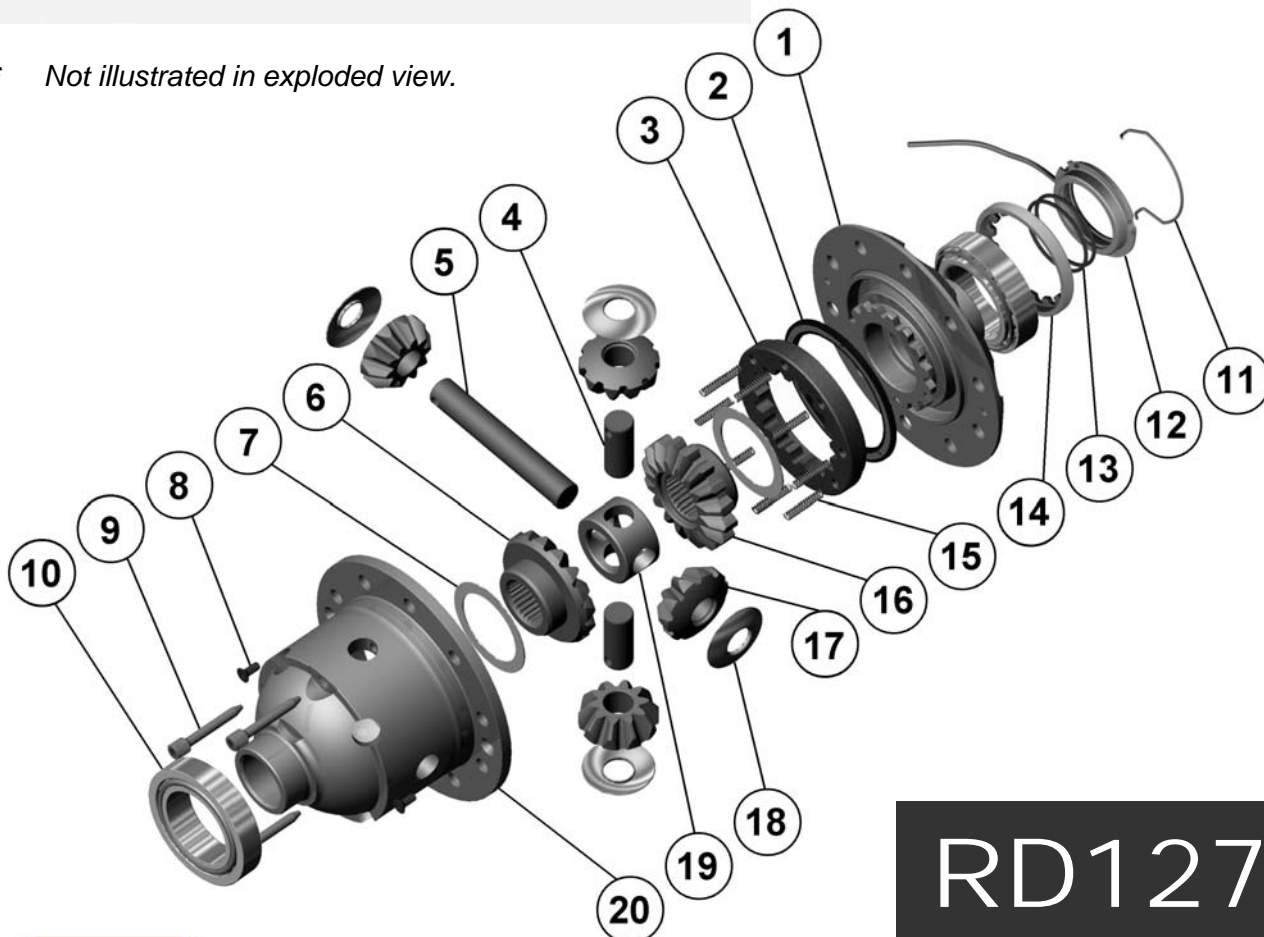
- 1 For replacement O-rings use only BS130 Viton 75.
- 2 Available only as complete 6 gear set # 728H131

Both types of Land Rover adjuster nut are supplied with this model. Early models using 100301 will require a special carrier bearing to suit the Air Locker. (Timken #11162 / 11300)

5mm [3/16"] ring gear spacer plate (ARB part# 'RD03A') is available for use with early Land Rover 4.7:1 ratio gear but longer bolts must be used (Land Rover part# 576521).

Refer to seal housing set-up tech note ([Sec. 5.2](#)).

* Not illustrated in exploded view.



RD127

