

# ARB AIR LOCKER *Air Operated Locking Differentials*

## **RD145** ROCKWELL 2.5T, 16 SPL

### Specs:

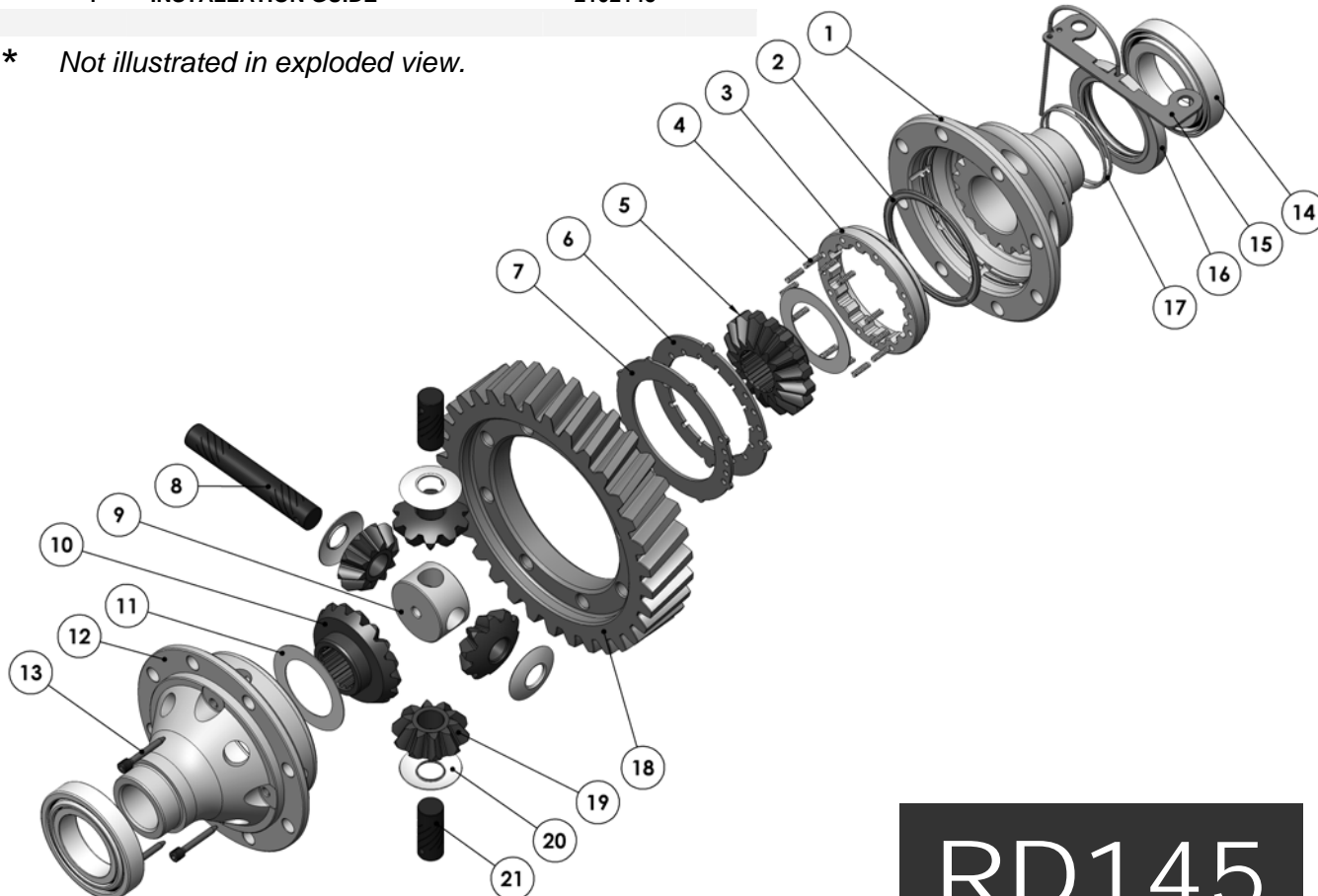
Axle Spline	16 tooth, Ø41.3 [1.625"]
Ratio Supported	All
Ring Gear ID	206.38mm [8.125"]
Ring Gear OD	268mm [10.55"]
Ring Gear Bolts	8 bolts on Ø181.1mm [7.13"]

ITEM #	QTY	DESCRIPTION	PART #	NOTES
1	1	FLANGE CAP ASSEMBLY	028602	
2	1	BONDED SEAL	160703	
3	1	CLUTCH GEAR	050807	
4	12	RETURN SPRING	150107	
5	1	SPLINED SIDE GEAR	SEE NOTE	2
6	1	RETURN SPRING GUIDE BRACKET	220207	
7	1	RETURN SPRING SUPPORT BRACKET	220208	
8	1	LONG CROSS SHAFT	061501	
9	1	SPIDER BLOCK	070402	
10	1	SIDE GEAR	SEE NOTE	2
11	2	SIDE GEAR THRUST WASHER	151007	
12	1	DIFF CASE	013202	
13	3	RETAINING PIN	120601	
14	2	TAPERED ROLLER BEARING	NOT SUPPLIED	
15	1	SEAL HOUSING BRACKET	220206	
16	1	SEAL HOUSING ASSEMBLY	082102	
17	2	SEAL HOUSING O-RINGS	160246	1
18	1	HELICAL SPUR GEAR	NOT SUPPLIED	
19	4	PINION GEAR	SEE NOTE	2
20	4	PINION GEAR THRUST WASHER	151113	
21	2	SHORT CROSS SHAFT	061601	
*	1	BULKHEAD FITTING KIT (O-RING TYPE)	170111	
*	1	PUSH-IN FITTING (5mm to 1/8" BSPP)	170201	
*	1	AIR LINE (5mm DIA X 6m LONG)	170301	
*	1	NIPPLE (1/8" to 1/8" BSPT)	170501	
*	1	SOLENOID VALVE (12V)	180103	
*	1	SWITCH	180209	
*	1	SWITCH COVER (FRONT)	180210	
*	1	SWITCH COVER (REAR)	180211	
*	10	CABLE TIE	180301	
*	1	WARNING LABEL	210101	
*	1	BUMPER STICKER	210102	
*	1	OPERATION & SERVICE MANUAL	210200	
*	1	INSTALLATION GUIDE	2102145	

### Notes:

- 1 For replacement O-rings use only BS151 Viton 75.
- 2 Available only as complete 6 gear set # 728K021

\* Not illustrated in exploded view.



# RD145

