

ARB AIR LOCKER *Air Operated Locking Differentials*

RD147 Dana 44,35 SPL,3.73 & DN

Specs:

Axle Spline	35 tooth, Ø38.1mm [1.50"]
Ratio Supported	3.73:1 & down
Ring Gear ID	141.3mm [5.56"]
Ring Gear OD	216mm [8.5"]
Ring Gear Bolts	10 bolts on Ø168mm [6.61"]
Ring Gear Torque	75Nm [55 ft-lb] (3/8" bolts)
(see note 3)	95Nm [70 ft-lb] (7/16" bolts)
Backlash	0.15-0.25mm [0.006-0.010"]
Bearing Cap Torque	81Nm [60 ft-lb]

Notes:

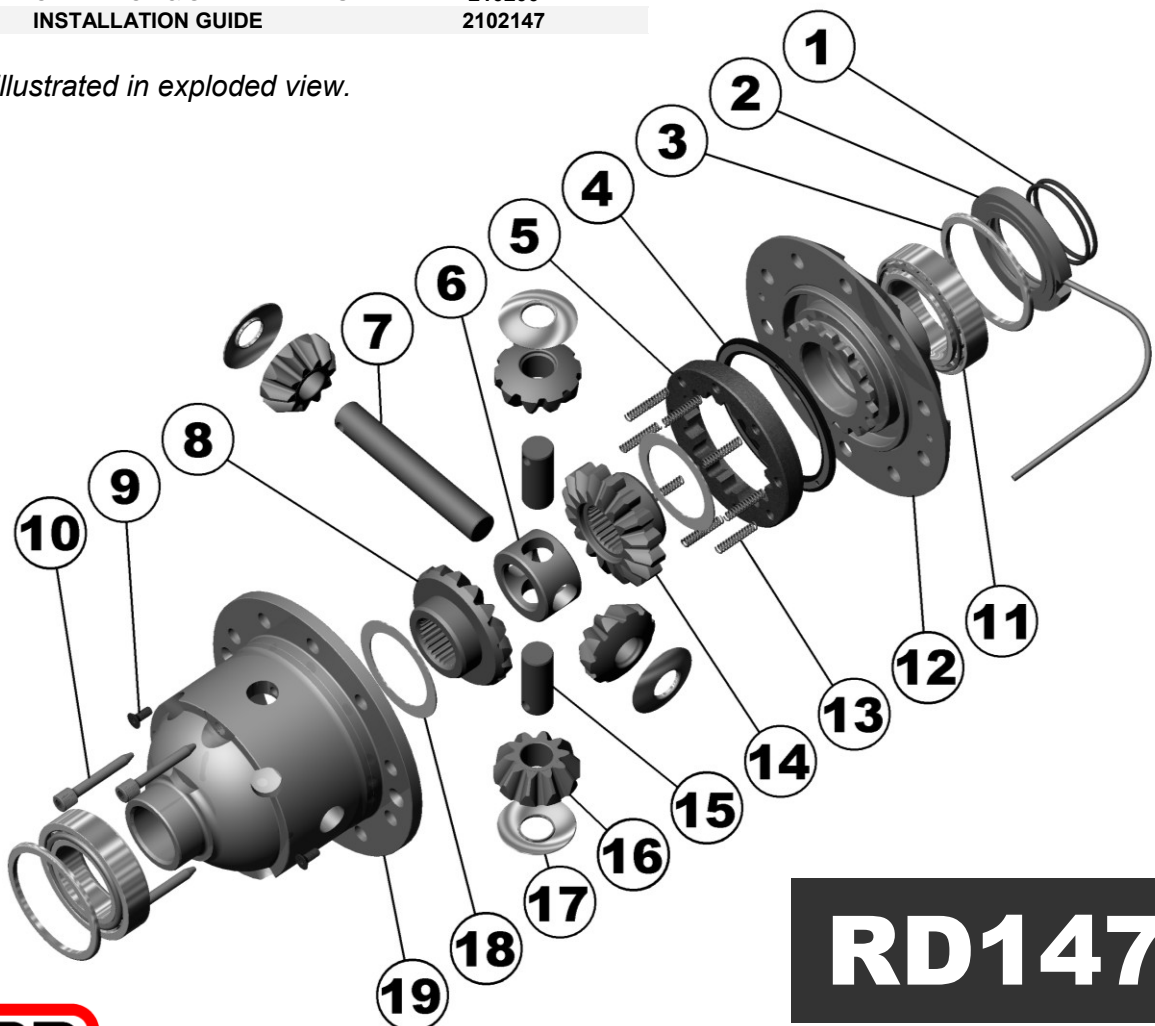
- 1 For replacement O-rings use only BS136 Viton 75.
- 2 For replacement bearing use Timken part # LM104949 / LM104912.
- 3 Newer OEM Dana 44 ring and pinion sets may use 3/8", 7/16" or 1/2" bolts. The flange holes of the Air Locker may need to be drilled or reamed from Ø3/8" to Ø7/16" or Ø1/2" to suit.
- 4 Available only as complete 6 gear set # 728H031

Suitable for use with ABS tone ring.

35 spline Dana 44 is a performance upgrade requiring aftermarket axle shafts.

ITEM #	QTY	DESCRIPTION	PART #	NOTES
1	2	SEAL HOUSING O-RING	160207	1
2	1	SEAL HOUSING ASSEMBLY	081803	
3	2	SHIM KIT	SHK009	
*	2	MASTER SHIM	150352	
4	1	BONDED SEAL	160703	
5	1	CLUTCH GEAR	050804	
6	1	SPIDER BLOCK	070201	
7	1	LONG CROSS SHAFT	060204	
8	1	SIDE GEAR	SEE NOTE	4
9	2	COUNTERSUNK SCREW	200213	
10	3	CROSS SHAFT RETAINING PIN	120601	
11	2	TAPERED ROLLER BEARING	160101	2
12	1	FLANGE CAP ASSEMBLY	027305	
13	12	RETURN SPRING	150113	
14	1	SPLINED SIDE GEAR	SEE NOTE	4
15	2	SHORT CROSS SHAFT	060403	
16	4	PINION GEAR	SEE NOTE	4
17	4	PINION THRUST WASHER	151110	
18	2	SIDE GEAR THRUST WASHER	151010	
19	1	DIFFERENTIAL CASE	013005	
*	1	BULKHEAD FITTING KIT (O-RING TYPE)	170111	
*	1	PUSH-IN FITTING (5mm to 1/8" BSPP)	170201	
*	1	AIR LINE (5mm DIA X 6m LONG)	170301	
*	1	NIPPLE (1/8" to 1/8" BSPT)	170501	
*	1	SOLENOID VALVE (12V)	180103	
*	1	SWITCH	180209	
*	1	SWITCH COVER (FRONT)	180210	
*	1	SWITCH COVER (REAR)	180211	
*	10	CABLE TIE	180301	
*	1	WARNING LABEL	210101	
*	1	BUMPER STICKER	210102	
*	1	OPERATION & SERVICE MANUAL	210200	
*	1	INSTALLATION GUIDE	2102147	

* Not illustrated in exploded view.



RD147

