

## **ARB CANOPY ROOF RACK CAGES**

**Steel: 4000010, 4000020, 4000120**

**Aluminium: 4900130, 4900140**

**& RACK FITTING KIT 4100500**

### **WARNING**

*Vehicle accessories, which are not properly fitted, can be dangerous. Please read these instructions carefully prior to fitting, and comply with the instructions at all times. If in any doubt please contact your nearest ARB state office or the stockist from whom it was purchased.*

### **SAFETY**

*Your ARB Roof Rack has a maximum carrying capacity of 100kg. This load should not be exceeded and all loads must be tied down securely*

*It is important to follow the listed usage instructions;*

- A) Load must be evenly distributed and adequately secured.*
- B) Any weight carried on the roof of the vehicle will adversely affect its handling, particularly in cornering or in a cross-wind, the vehicle should therefore be driven with increased discretion.*
- C) Regularly check the tightness of the securing clamps and the security of the load.*
- D) Attention is directed to statutory requirements regarding maximum permissible projections from vehicles.*

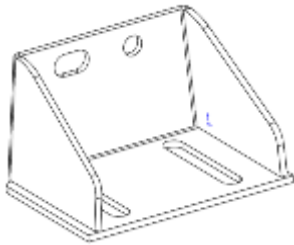
*All bolts should be checked prior to touring to ensure the rack is fastened correctly.*

## ROOF RACK CAGE FITTING KIT No 6171742 & 4100500

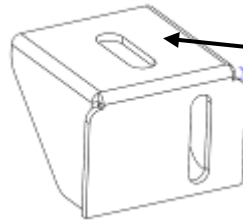
USE	PART No	QTY	DESCRIPTION
Fixing front mounting bracket to canopy	3756462	2	Canopy roof rack front foot
	3756460	2	Canopy roof rack front bracket
	665013	2	Front foot seal
	6151295	4	M8 x 20mm S/S button head screw
	4584317	4	5/16 x 1 x 16G S/S flat washer
	6151132	4	M8 flange nut
	<b><i>4581018</i></b>	<b><i>2</i></b>	<b><i>14mm spacing washer</i></b>
	<b><i>6151232</i></b>	<b><i>2</i></b>	<b><i>Bolt M10 x 30mm x 1.5</i></b>
	<b><i>4581040</i></b>	<b><i>4</i></b>	<b><i>M10 Flat washer</i></b>
	<b><i>4581048</i></b>	<b><i>2</i></b>	<b><i>M10 spring washer</i></b>
	<b><i>6151026</i></b>	<b><i>2</i></b>	<b><i>M10 x 1.5 hex nut</i></b>
Fixing rear bracket to canopy	665500	2	Rear foot seal
	<b><i>4581018</i></b>	<b><i>2</i></b>	<b><i>14mm spacing washer</i></b>
	<b><i>6151232</i></b>	<b><i>2</i></b>	<b><i>Bolt M10 x 30mm x 1.5</i></b>
	<b><i>4581040</i></b>	<b><i>4</i></b>	<b><i>M10 flat washer</i></b>
	<b><i>4581048</i></b>	<b><i>2</i></b>	<b><i>M10 spring washer</i></b>
	<b><i>6151026</i></b>	<b><i>2</i></b>	<b><i>M10 x 1.5 hex nut</i></b>
	<b><i>6151026</i></b>	<b><i>2</i></b>	<b><i>M10 x 1.5 hex nut</i></b>
Fixing roof rack to front mounting bracket	6151524	4	M8 x 20 S/S hex head bolt
	4584317	4	5/16 x 1 x 16G S/S flat washer
	6151132	4	M8 flange nut

Tools needed for installation of canopy roof rack cage: Basic tool kit, 5mm, 6mm Hex keys, drill and 8mm drill bit.

**Note:** Parts listed in italics are supplied in the fitting kit of the internal racks

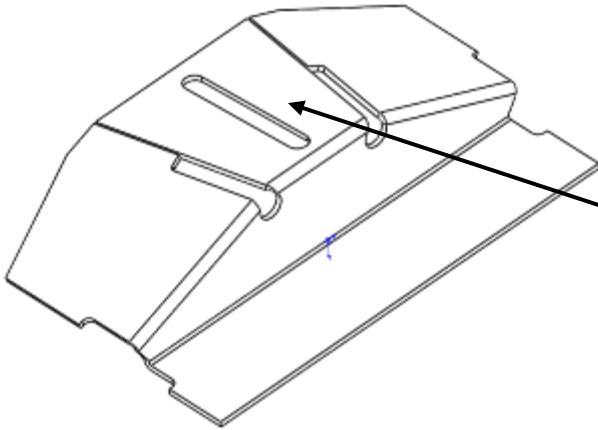


Front Bracket



Front Foot Bracket

1. Stick the front foot seal on the top face of the front foot bracket.



2. Stick the rear leg seal on the bottom surface of the rear leg.



3. Attach the front foot bracket to the canopy using the M10 bolt, two flat washers, spring washer and nut. Do not tighten, as you will need to remove it later. **NOTE.** The vertical face is to the outside of the vehicle.
4. Attach the front bracket to the front foot bracket using a M8 **button head**, washer and flange nut. Finger tighten only at this stage.

**IMPORTANT.** Depending on the canopy you are fitting to. The front brackets can be assembled with the slots to the centreline of the vehicle (as shown) or with the slots towards the outside of the vehicle. To determine the direction the front bracket sits. Measure the mounting hole centres on the roof rack and assemble the front bracket in the direction that the slots will line up.

5. Align the rear of the roof rack so that the rear mounts sit centrally over the holes in the roof.

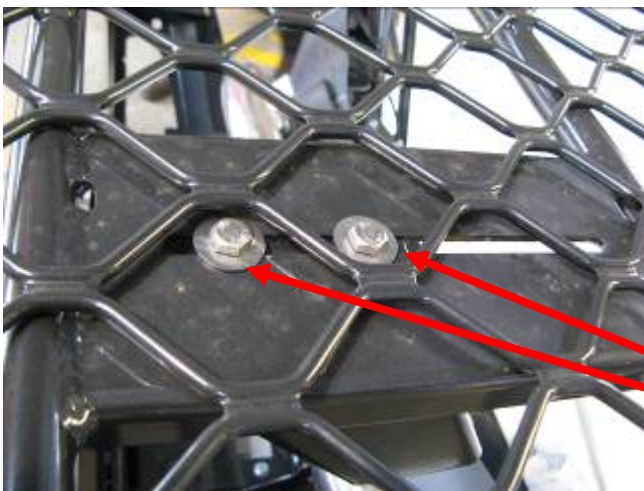


6. Once the roof rack is placed centrally on the vehicle and the rear mounts are located in their correct position adjust the front mounts to get the roof rack level. Do not bolt the roof rack in place at this point in time.



7. When satisfied with the position of the roof rack fully tighten the bolt joining the two parts of the front mount. **NOTE.** The front mounts can be adjusted so that if the vehicle has a roof rail on the cab, the roof rack can be lined up to sit level with the cross bar.

### **MESH TYPE RACKS**



For mesh type racks, position the brackets so that the mesh will not interfere with the mounting bolts that will be done up later (it may be necessary to drop the bolts in to check)

Mesh not interfering with bolts



If the mounting bolts do interfere with the mesh, relocate the mounting bracket by moving it forwards or backwards to obtain the desired bolt clearance



8. Remove the roof rack and the front mounting brackets. Using a 8mm drill bit, drill a pinning hole using the existing hole in the bracket as a template.
9. Pin the bracket using M8 cap screw, flat washer and flange nut. Tighten.
10. Replace the front mounting brackets making sure that the 14mm spacing washer is in place. Apply silicon around the spacing washer and the bolt attaching the mount to the canopy to help in avoiding water leaks.



11. Attach the front bracket to the roof of the canopy making sure that the 14mm spacer washer is in place before attaching the bracket. Secure using M10 bolt, flat washers, spring washer and hex nut.
12. Apply silicon around the 14mm spacer washer and also the bolt to help in avoiding water leaks.
13. Fasten the rear mounting bracket to the canopy using M10 bolt, two flat washers, spring washer and hex nut, again making sure that the 14mm spacer is in place and tighten.

\*14mm Spacer\*



14. Fix the front of the roof rack to the front mounts using the remaining M8 cap screws, flat washers and flange nuts. Once everything is assembled check to see that all nuts are tightened securely.

All Mounting points should be checked for tightness at regular intervals.