

# ARB AIR LOCKER *Air Operated Locking Differentials*

## **RD132** Toyota 8", 50mm BRNG

### Specs:

Axle Spline	30 tooth, Ø33mm [1.31"]
Ratio Supported	All
Ring Gear ID	126.0mm [4.96"]
Ring Gear OD	200mm [8"]
Ring Gear Bolts	10 bolts on Ø160mm [6.30"]
Ring Gear Torque	95Nm [70 ft-lb]
Backlash	0.15-0.25mm [0.006-0.010"]
Bearing Cap Torque	95Nm [70 ft-lb]

ITEM #	QTY	DESCRIPTION	PART #	NOTES
01	1	FLANGE CAP ASSEMBLY	027309	
02	1	BONDED SEAL	160702	
03	1	CLUTCH GEAR	050806	
04	2	SHORT CROSS SHAFT	060403	
05	1	LONG CROSS SHAFT	060204	
06	1	SIDE GEAR	SEE NOTE	3
07	2	SIDE GEAR THRUST WASHER	151010	
08	2	COUNTERSUNK SCREW	200213	
09	3	RETAINING PIN	120601	
10	-	TAPERED ROLLER BEARING	NOT SUPPLIED	2
11	1	SEAL HOUSING RETAINING CLIP	150601	
12	1	SEAL HOUSING ASSEMBLY	081901	
13	2	SEAL HOUSING O-RINGS	160207	1
14	1	ADJUSTER NUT	100101	
15	8	RETURN SPRINGS	150113	
16	1	SPLINED SIDE GEAR	SEE NOTE	3
17	4	PINION GEAR	SEE NOTE	3
18	4	PINION THRUST WASHER	151110	
19	1	SPIDER BLOCK	070201	
20	1	DIFFERENTIAL CASE	013009	
*	1	ADJUSTER NUT	100103	
*	1	BULKHEAD FITTING KIT (O-RING TYPE)	170111	
*	1	PUSH-IN FITTING (5mm to 1/8" BSPP)	170201	
*	1	NIPPLE (1/8" to 1/8" BSPT)	170501	
*	1	AIR LINE (5mm DIA X 6m LONG)	170301	
*	1	SOLENOID VALVE (12V)	180103	
*	1	SWITCH	180209	
*	1	SWITCH COVER (FRONT)	180210	
*	1	SWITCH COVER (REAR)	180211	
*	10	CABLE TIE	180301	
*	1	WARNING LABEL	210101	
*	1	BUMPER STICKER	210102	
*	1	OPERATION & SERVICE MANUAL	210200	
*	1	INSTALLATION GUIDE	2102132	

### Notes:

- 1 For replacement O-rings use only BS136 Viton 75.
- 2 For 80mm Bearing OD use Timken Bearing #32010X (ARB# 160116).
- 2 For 83mm Bearing OD use Koyo or SKF bearing TR100802-2 (ARB# 160118).
- 3 Available only as complete 6 gear set # 728H111

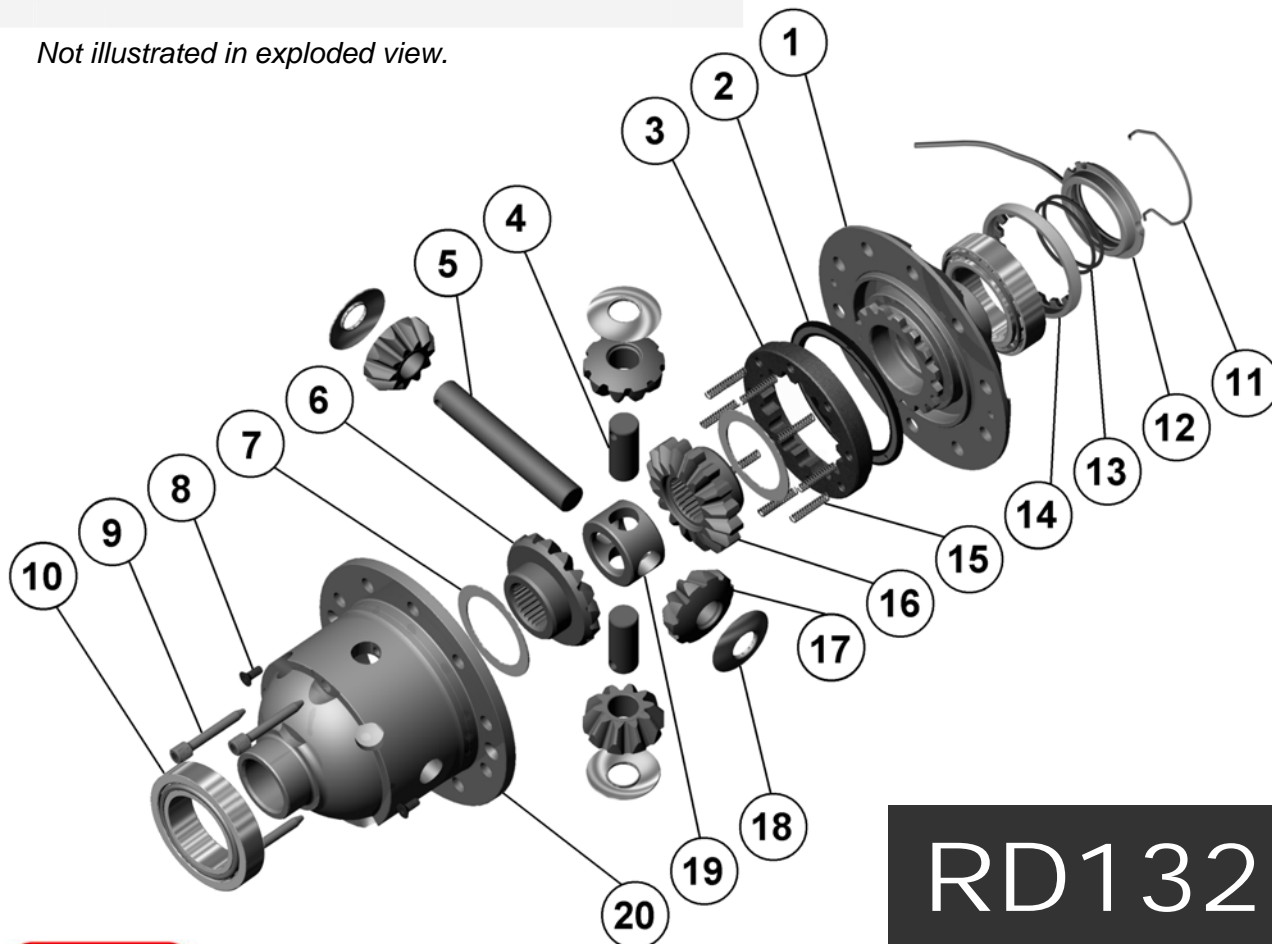
For 8" Toyota IFS refer to RD111 ([Section 2.111](#)) RD121 ([Section 2.121](#)) & RD131 ([Section 2.131](#)).

For 8" Toyota shim pre-loaded rear refer to RD133 ([Section 2.133](#)).

Refer to seal housing set-up tech note ([Sec. 5.2](#)).

Refer to pinion modification tech note ([Sec. 5.6](#)).

\* *Not illustrated in exploded view.*



# RD132

